

STANDARD PRODUCT

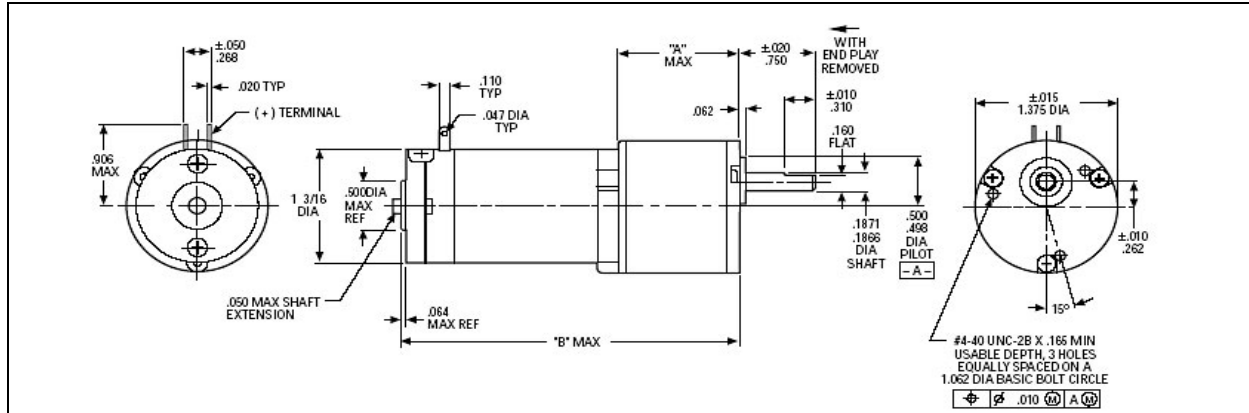


Date: 08/07/2008

Prepared for: Production

Planetary Gearmotor

Model Number: MMP G13-12V GS-298



| DC MOTOR PERFORMANCE PARAMETERS | Value | Units | Tolerance |
|--|-------|-------------|-----------|
| RATED VOLTAGE D.C. | 12.0 | VOLTS | ---- |
| RATED CONTINUOUS CURRENT | 0.80 | AMPERE | ---- |
| RATED CONTINUOUS TORQUE | 1.5 | OZ - IN | ---- |
| RATED SPEED | 5200 | RPM | +/- 15% |
| RATED CONTINUOUS POWER OUT | 6 | WATTS | +/- 15% |
| NO LOAD SPEED | 6000 | RPM | MAX |
| NO LOAD CURRENT | 0.20 | AMPS | MAX |
| BACK EMF CONSTANT (Ke) | 2.0 | V/KRPM | +/- 10% |
| TORQUE CONSTANT (Kt) | 2.7 | OZ - IN / A | +/- 10% |
| DC ARMATURE RESISTANCE AT 1.5 AMPS | 7.3 | OHMS | +/- 15% |
| ARMATURE TEMP | 130 | DEGR. C | MAX |
| PEAK TORQUE (motor-only) | 34 | OZ - IN | ---- |
| PLANETARY GEARMOTOR OUTPUT PARAMETERS: | | | |
| GEARHEAD RATIO | 298:1 | | |
| GEAR MOTOR RATED CONTINUOUS TORQUE | 100 | OZ-IN. | MAX |
| GEAR MOTOR RATED PEAK TORQUE | 100++ | OZ-IN. | MAX |
| GEARHEAD SHAFT OUTPUT SPEED (@ F.L.) | 17 | RPM | ---- |
| GEARMOTOR TOTAL LENGTH ("B" DIMENSION) | 3.02 | INCH | MAX |
| GEARHEAD EFFICIENCY | 61% | | |
| GEARMOTOR TOTAL WEIGHT | 10 | OUNCES | MAX |

++ All Peak Torque Values are dependent upon duty. Kindly consult our Sales Offices for further details

MIDWEST MOTION PRODUCTS

Design, Manufacturing & Distribution – Motion Control Equipment

10761 Ahern Avenue S. E. Watertown, MN. 55388

Phone: 952-955-2626 e-Fax: 480-247-4096

www.midwestmotion.com

email: randy@midwestmotion.com